

MONTHLY MEMBERSHIP PROGRESS REPORT

District 26 M1

Results as of: 5/31/2024

GMT:

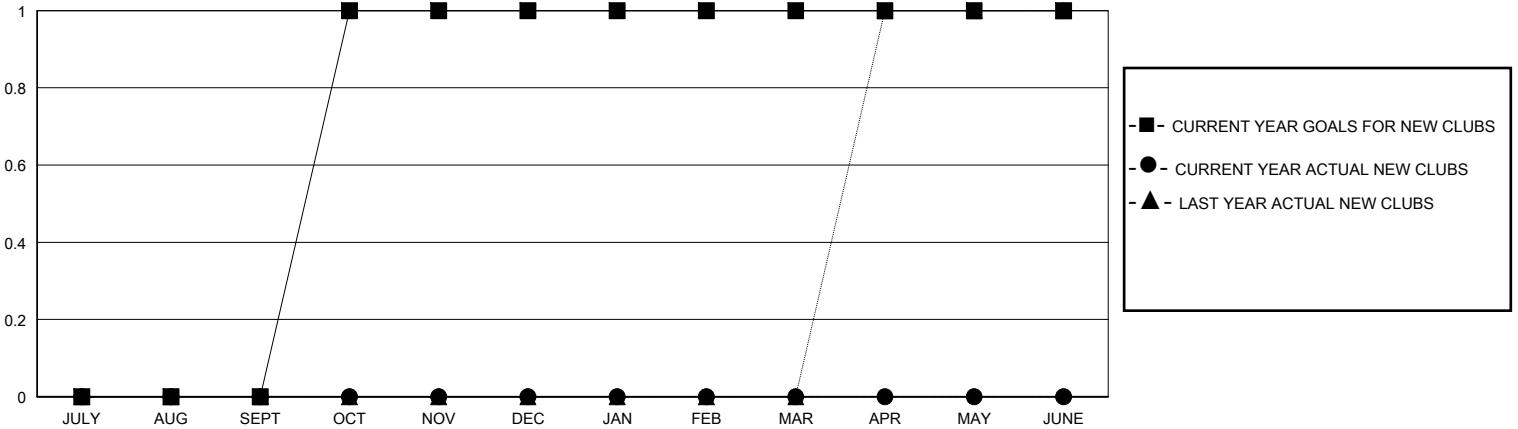
LOCATION MISSOURI

GMT CA

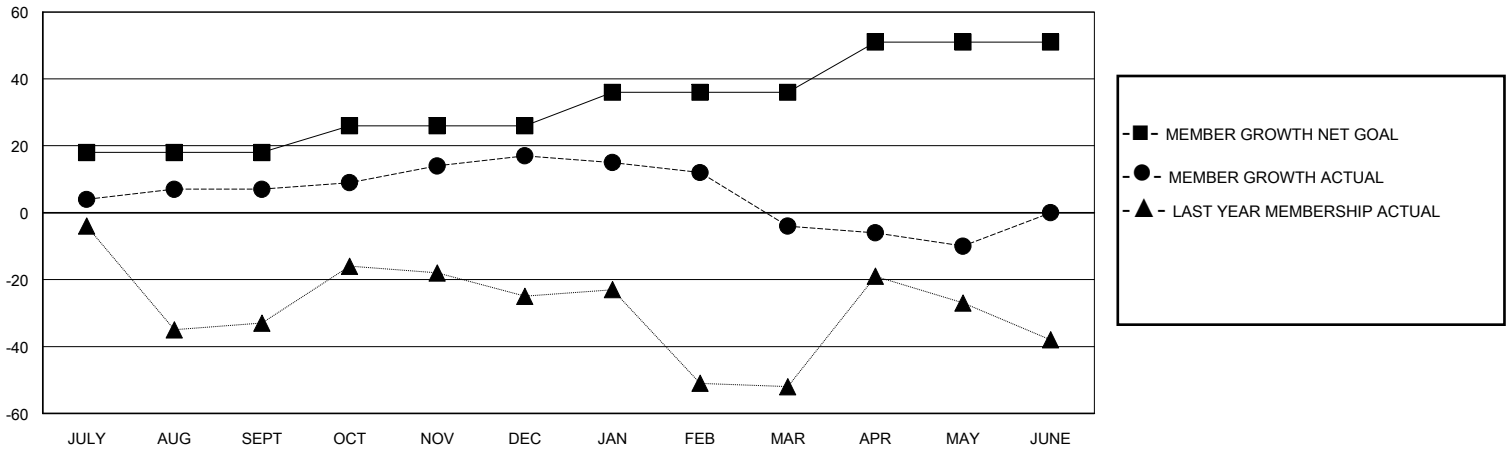
Clubs			
RESULTS FOR 2023-2024			
QUARTER	NEW CLUB GOAL	NEW CLUBS	DROPPED CLUBS
JULY/AUG/SEPT	0	0	0
OCT/NOV/DEC	1	0	0
JAN/FEB/MAR	0	0	0
APR/MAY/JUNE	0	0	0

Members			
RESULTS FOR 2023-2024			
QUARTER	MEMBER GROWTH NET GOAL	MEMBER GROWTH ACTUAL	DROPPED MEMBERS ACTUAL (including transfers)
JULY/AUG/SEPT	18	22	14
OCT/NOV/DEC	8	26	15
JAN/FEB/MAR	10	15	35
APR/MAY/JUNE	15	5	9

GOALS AND ACTUAL NEW CLUBS CUMULATIVE



GOALS AND ACTUAL MEMBERS CUMULATIVE



DROPPED CLUBS: 0	19 CLUBS OF 35 ADDED 1 OR MORE NEW MEMBERS	GENDER DISTRIBUTION MALE 696 (71.53%) FEMALE 276 (28.37%)
DROPPED MEMBERS DECEASED 19 CLUB CANCELLED 0 OTHER 54 TOTAL 73	CLICK HERE FOR CUMULATIVE MEMBERSHIP DATA	TOTAL FAMILY UNIT MEMBERS 137 FAMILY MEMBERS PAYING HALF DUES 69